



# Hana Food Gallery Menu

<https://menuweb.menu/restaurants/furesoe/kawaii-zushi>  
Farum Hovedgade 79, Furesoe, Denmark  
**+4544957002 - [nemtakeaway.dk](http://nemtakeaway.dk)**

## Categories

Sushimenuer

Futomaki

Hosomaki

Bubble Tea

Uramaki

Kaburimaki

Tilbehør

Forretter

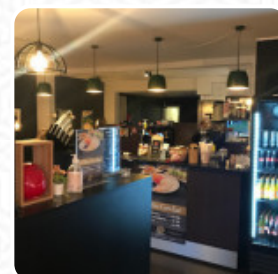
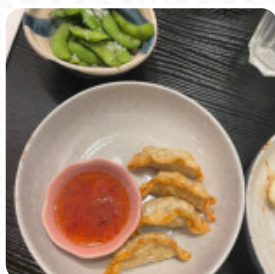
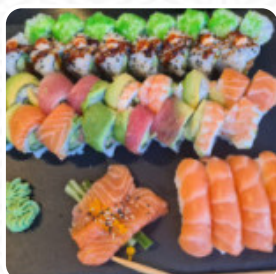
Bubble Special

Børnemenuer

Bubble Milk

Salater

Rispapir



[View gallery](#)

[View menu](#)

[View reviews](#)

# Hana Food Gallery Menu



## Sushi Rolls

SUSHI

## Side Dishes

RICE

## Gunkan

GUNKAN FLYVESKEROGN 56 kr

## Sonstiges

MISO SOUP 55 kr

## Dips

TERIYAKI DIP 10 kr

## Sushi Meny

NIGIRI SALMON 56 kr

## Varme Retter

EDAMAME BØNNER (V) 43 kr

## Sides

WASABI 8 kr

## Crunchy Syake

SESAM DIP 10 kr

## These Types Of Dishes Are Being Served

FISH

## Inside-Out-Maki Half Roll

URAMAKI SPICY TUNA 95 kr

## Dyppelse

CHILIMAYO DIP 10 kr

## Rispapir maki

RISPAPIR LAKS 109 kr

## Udenlandske øl

ASAHI 5,0% 0,33 L 45 kr

## Kaburimaki 8 stk

KABURIMAKI CRISPY RAINBOW 149 kr

## Sticks/ Veggies sticks

ASPARGES I BACON (1 STK) 30 kr

## Dagens supertilbud, kun 10 eksemplarer til salg

MINI FORÅRSRULLER (8 STK) 50 kr

## Hot Drinks

TEA

MILK TEA

## Sodavand

RAMUNE JORDBÆR 0,2 L 40 kr

RAMUNE BLÅBÆR 0,2 L 40 kr

## Øl

SAPPORO 4,7 0,33 L 45 kr

SAPPORO PREMIUM BEER 5,0% 0,65 L 75 kr

## Sashimi

SASHIMI SALMON 128 kr

SASHIMI TUN 140 kr

SASHIMI MIX (12 STK) 208 kr

# Hana Food Gallery Menu



## Bubble Milk

BUBBLE TEA MILK TEA LATTE TARO	69 kr
BUBBLE TEA MILK TEA LATTE KOKOS TARO	69 kr
BUBBLE TEA MILK TEA LATTE KOKOS	69 kr

## Salater

KREBSEHALESALAT	159 kr
COMBO SKÅL POKE BOWL	130 kr
PANERET KYLLINGESKÅL	139 kr

## Ingredients Used

BEANS  
PRAWNS  
MILK

## Rispapir

RISPAPIR PANERET REJE	109 kr
RISPAPIR PANERET KYLLING	109 kr
RISPAPIR KREBSEHALER	109 kr

## Forretter

HUSETS EDAMAME BØNNER (V)	43 kr
CRISPY REJE (4 STK)	60 kr
GYOZA MED KYLLING (4 STK)	50 kr
CRISPY KYLLING (4 STK)	50 kr

## Bubble Special

BUBBLE TEA SPECIAL FRUIT TEA PASSION MANGO	69 kr
BUBBLE TEA SPECIAL FRUIT TEA PASSION ANANAS	69 kr
BUBBLE TEA SPECIAL FRUIT TEA LITCHI FERSKEN	69 kr

BUBBLE TEA SPECIAL FRUIT TEA MANGO ANANAS	69 kr
---	-------

## Børnemenuer

BØRNE NIGIRI MENU (6 STK)	139 kr
BØRNE SUSHI MENU (10 STK)	139 kr
BØRNE MIX MENU (10 STK)	139 kr
BØRNE STICKS MENU	139 kr

## Tilbehør

TANGSALAT (V)	43 kr
SUSHI RIS (V)	28 kr
RIS (V)	28 kr
GINGER	10 kr
SOYA 0,15 L	5 kr

## Sticks

KYLLINGEBOLLER (1 STK)	28 kr
PANERET KYLLINGESTICK (1 STK)	28 kr
LAMMEKRONE (1 STK)	48 kr
OKSEFILET (1 STK)	33 kr
KYLLINGESTICK MED CHILI OG FORÅRSLØG (1 STK)	30 kr
LAKSESTICK MED TERIYAKI (1 STK)	30 kr

## Kaburimaki

KABURIMAKI TIGER	149 kr
KABURIMAKI CRAZY	149 kr
KABURIMAKI RAINBOW	149 kr
KABURIMAKI CAT	149 kr
KABURIMAKI DRAGON	149 kr
KABURIMAKI SPRINGTIME (V)	149 kr

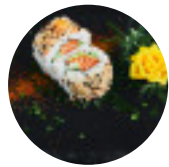
## Nigiri

# Hana Food Gallery Menu



NIGIRI TUN	56 kr
NIGIRI REJE	56 kr
NIGIRI GRILLET LAKS	56 kr
NIGIRI CHILI TUN	56 kr
NIGIRI CHILI REJE	56 kr
NIGIRI TOFULOMMER (V)	50 kr
NIGIRI NANO RISKUGLER (10 STK) (V)	56 kr

## Uramaki



URAMAKI PHILLI LAKS	95 kr
URAMAKI ORANGE LAKS	95 kr
URAMAKI SPICY LAKS	95 kr
URAMAKI GRØN CALIFORNIA	95 kr
URAMAKI TUNA MANGO	95 kr
URAMAKI PANERET REJE	95 kr
URAMAKI PANERET KYLLING	95 kr

## Bubble Tea

BUBBLE TEA FRUIT TEA PASSIONSFRUGT	69 kr
BUBBLE TEA FRUIT TEA BLÅBÆR	69 kr
BUBBLE TEA FRUIT TEA ANANAS	69 kr
BUBBLE TEA FRUIT TEA FERSKEN	69 kr
BUBBLE TEA FRUIT TEA LITCHI	69 kr
BUBBLE TEA FRUIT TEA MANGO	69 kr
BUBBLE TEA FRUIT TEA JORDBÆR	69 kr
BUBBLE TEA FRUIT TEA HONEYMELON	69 kr
BUBBLE TEA MILK TEA LATTE ISKAFFE	69 kr

## Futomaki

FUTOMAKI CALIFORNIA	86 kr
---------------------	-------



FUTOMAKI KREBSEHALE	86 kr
FUTOMAKI TUN	86 kr
FUTOMAKI LAKS	86 kr
FUTOMAKI PANERET REJE	86 kr
FUTOMAKI PANERET KYLLING	86 kr
FUTOMAKI LAKS TEMPURA	86 kr
FUTOMAKI TUN TEMPURA	86 kr
FUTOMAKI TEMPURA CALIFORNIA	86 kr
FUTOMAKI TEMPURA CRISPY REJER	86 kr

## Hosomaki



HOSOMAKI LAKS	57 kr
HOSOMAKI LAKS HVIDLØG	57 kr
HOSOMAKI LAKS PURLØG OG CHILIMAYO	57 kr
HOSOMAKI TUN	57 kr
HOSOMAKI TUN PURLØG OG CHILIMAYO	57 kr
HOSOMAKI REJE	57 kr
HOSOMAKI REJE KORIANDER CHILI	57 kr
HOSOMAKI AGURK (V)	57 kr
HOSOMAKI AVOCADO (V)	57 kr
HOSOMAKI MANGO (V)	57 kr

## Sushimenuer

HANA SUSHI MENU (20 STK)	279 kr
MAKI COMBO MENU (28 STK)	318 kr
PAIR SUSHI MENU (24 STK)	329 kr
TWOSOME MAKI MENU (40 STK)	450 kr
FAVORIT MENU (38 STK)	408 kr
TRIPLE SUSHI MENU (42 STK)	450 kr

# Hana Food Gallery Menu



<b>FAMILY SUSHI MENU 1 (48 STK)</b>	<b>560 kr</b>	<b>DEN GRØNNE SUSHI MENU (14 STK) (V)</b>	<b>198 kr</b>
<b>STOR FAMILY SUSHI MENU 2 (66 STK)</b>	<b>770 kr</b>	<b>KABURIMAKI MENU (24 STK)</b>	<b>378 kr</b>
<b>MAKI UPGRADE SUSHI MENU (36 STK)</b>	<b>400 kr</b>	<b>URAMAKI MENU (32 STK)</b>	<b>358 kr</b>
<b>PARTY SUSHI MENU (84 STK)</b>	<b>999 kr</b>	<b>YAKITORI COMBO MENU</b>	<b>198 kr</b>
<b>GOURMET SUSHI MENU (40 STK)</b>	<b>450 kr</b>	<b>MÅNEDENS SUSHI MENU (46 STK)</b>	<b>560 kr</b>
<b>FAMILY MIX SUSHI MENU (52 STK)</b>	<b>730 kr</b>	<b>STOR LAKS SUSHI MENU (18 STK)</b>	<b>250 kr</b>
<b>LAKS SUSHI MENU (14 STK)</b>	<b>189 kr</b>	<b>SOMMERS SUSHI MENU (44 STK)</b>	<b>535 kr</b>

[View gallery](#)[View menu](#)[View reviews](#)

# Hana Food Gallery Menu



---

## Hana Food Gallery

Farum Hovedgade 79, Furesoe,  
Denmark

**Opening Hours:**

Sunday 12:00-21:00

Monday 12:00-21:00

Tuesday 12:00-21:00

Wednesday 12:00-21:00

Thursday 12:00-21:00

Friday 12:00-21:00

Saturday 12:00-21:00

Made with [Menu](#)

