



# Yami Running Sushi Menu

<https://menuweb.menu/restaurants/gentofte/yami-running-sushi>  
Strandvejen 86, Gentofte, Denmark  
+4539624118,+4520206666 - [yami.dk](http://yami.dk)

## Categories

Sushimenuer

Uramaki

Futomaki

Forretter

Kaburimaki

Hosomaki

Rispir

Tilbehør

Øl

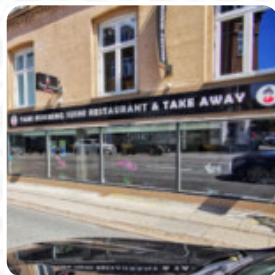
Uncategorized

Salads

Non Alcoholic Drinks

Sushi Rolls

Extras



[View gallery](#)

[View menu](#)

[View reviews](#)

# Yami Running Sushi Menu



## Salads

SEAWEED SALAD

## Non Alcoholic Drinks

WATER

## Sushi Rolls

SUSHI

## Extras

TERIYAKI SAUCE 10 kr

## Gnocchi

GNOCCHI

## Fish

SEA BASS

## Extra

CHILIMAYO 10 kr

## Beilagen Und Saucen

GOMASAUCE 10 kr

## Dips

SØD CHILISAUCE 10 kr

## ALKOHOLFREIE GETRÄNKE

FANTA 1,5 L 40 kr

## Sodavand

FAXE KONDI 1,5 L 40 kr

## Engangsservice

SERVIETTER

## Udenlandske øl

SAPPORO 4,7% 0,33 L 40 kr

## Sushi menuer

URAMAKI MENU (32 STK.) 358 kr

## Sashimi

21.TUN SASHIMI 90 kr

20.LAKS SASHIMI 90 kr

## Sauces

KETCHUP

MAYONNAISE

## Tilbehør

SPISEPINDE

8.RIS (VG) 28 kr

## Øl

KIRIN ICHIBAN 5,0% 0,33 L 40 kr

SAPPORO 4,7% 0,65 L 60 kr

## Uncategorized

COCA-COLA 1,5 L 40 kr

COCA-COLA ZERO 1,5 L 40 kr

## These Types Of Dishes Are Being Served



DESSERTS

NOODLES

SALAD

## Rispapir

78.RISPAPIR TEMPURA KYLLING 90 kr

77.RISPAPIR EBI REJER 90 kr

# Yami Running Sushi Menu



76.RISPAPIR LAKS 90 kr

## Sticks

12.KYLLINGFILLET (1 STK. 25 kr

13.OKSEKØD (1 STK. 28 kr

15.KÆMPE TIGERREJE (1 STK. 25 kr

16.LAKS (1 STK. 28 kr

17.KYLLINGE KØDBOLLER (1 STK. 25 kr

## Hosomaki

43.TIGERREJER HOSOMAKI 45 kr

44.TUN HOSOMAKI 45 kr

47.AVOCADO HOSOMAKI (VG) 40 kr

45.LAKS HOSOMAKI 45 kr

46.AGURK HOSOMAKI (VG) 40 kr

## Ingredients Used

BEEF

PRAWNS

AVOCADO

APPLE SLICES

HAM

## Nigiri

75.INARI TOFU (VG) 25 kr

73.NIGIRI AVOCADO (VG) 20 kr

68.NIGIRI TIGERREJE 25 kr

63.NIGIRI TUN 25 kr

60.NIGIRI GRILLET LAKS 25 kr

59.NIGIRI LAKS 25 kr

## Uramaki

40.URAMAKI SPICY LAKS 90 kr

39.URAMAKI CALIFORNIA 85 kr

38.URAMAKI ALASKA 90 kr

41.URAMAKI SPICY REJER 90 kr

35.URAMAKI EBI TEMPURA 90 kr

42.URAMAKI SPICY TUN 90 kr

## Futomaki

55.FUTOMAKI SPICY LAKS 70 kr

51.FUTOMAKI TEMPURAREJER 70 kr

50.FUTOMAKI YAMI EBI REJER 95 kr

56.FUTOMAKI SPICY TUN 70 kr

57.FUTOMAKI CALIFORNIA 70 kr

58.FUTOMAKI VEGETAR (VG) 65 kr

## Forretter

3.TANGSALAT (VG) 45 kr

9.VEGETAR FORÅRSRULLER (4 STK. (V 40 kr

6.REJECHIPS 30 kr

10.GYOZA (4 STK. 50 kr

11.EBI TEMPURAREJER (4 STK. 55 kr

1.EDAMAMEBØNNER (VG) 40 kr

## Kaburimaki

27.TEMPURA KYLLING DELUXE ROLL 135 kr

24.TEMPURAREJER GRILLET LAKS DELUXE ROLL 135 kr

25.TEMPURAREJER AVOCADO DELUXE ROLL 135 kr

33.TUN DELUXE ROLL 135 kr

29.GRILLET LAKS DELUXE ROLL 135 kr

28.VEGETAR DELUXE ROLL (VG) 130 kr

## Sushimenuer

SUSHIBOX (90 STK. 990 kr

# Yami Running Sushi Menu



SUSHIBOX (100 STK.)	1,100 kr	SUSHIBOX (30 STK.)	320 kr
SUSHIBOX (80 STK.)	890 kr	SUSHIBOX (20 STK.)	220 kr
SUSHIBOX (70 STK.)	780 kr	SUSHIBOX (10 STK.)	100 kr
SUSHIBOX (60 STK.)	660 kr	VEGETAR MENU (18 STK. (V	138 kr
SUSHIBOX (50 STK.)	560 kr	NIGIRI MENU (8 STK.)	118 kr
SUSHIBOX (40 STK.)	420 kr	EBI TEMPURA MENU (24 STK.)	298 kr

[View gallery](#)[View menu](#)[View reviews](#)

# Yami Running Sushi Menu



## Yami Running Sushi

Strandvejen 86, Gentofte,  
Denmark

**Opening Hours:**

Sunday 16:00-21:00

Tuesday 16:00-21:00

Wednesday 16:00-21:00

Thursday 16:00-21:00

Friday 16:00-22:00

Saturday 16:00-22:00

Made with [Menu](#)

